

ORGANIZATION PROFILE: CENTRE FOR SUSTAINABLE DEVELOPMENT AND ACTION ON CLIMATE CHANGE



Introduction

Centre for Sustainable Development and Action on Climate Change (CSDACC), is a non-profit youth-led organization that focuses on Sustainable Development and Climate Change-related issues while ensuring environmental sustainability through conservation and improvement of livelihoods in the communities. At the mean time our scope is Kilifi County and later on with a fully established foundation, we shall expand to the rest of the country and possibly the whole world. CSDACC was founded on April 2014 by a proactive youth in Education for Sustainable Development (ESD), Mr. Hamisi Tsama Mkuzi under the auspices of development minded youth to respond to the environmental challenges threatening the sustainability of the environment in the near future.

CSDACC encourages youth to be at the forefront in campaigning and ensuring the future's generation life is not compromised in any way. **Education** is one of the tools we shall employ so as to enable us meet our set objectives.

Centre for Sustainable Development and Action on Climate Change is registered as a youth organization with the Department of Gender, Children and Social Services, with a mandate to operate legally within Kenya.

Centre for Sustainable Development and Action on Climate Change still operates within Pwani University premise where it is affiliated to RCE-Greater Pwani; due to the fact that it is still in its initial stages but soon will find itself an office within Kilifi Area after a strong foundation is established.

Centre for Sustainable Development and Action on Climate Change, a non-profit making Youth-led Organization is committed to build, nurture restore and preserves the socio-economic and cultural environment of Kilifi County to make Kilifi County an epitome of development.



Centre for Sustainable Development and Action on Climate Change is a **local Youth-led Organization** and our target beneficiary are the general communities around the world who plays a pivotal role in instilling and challenging sustainable development in the Globe.

MEMBERSHIP

The organization current membership stands at eight (8) females and seven (7) males with a greater proportion of the members from Kilifi County (56.25%). Membership to the organization is open to youth both in Kilifi County, other counties in Kenya and the whole world at large who are ready to share in the organization's vision, mission and objectives.

VISION

To be a global leader in environmental and community services.

MISSION STATEMENT

To engage extensively on a multi-faceted Sustainable Development and Climate Change Action-related activities that would help bridge poverty gap, mitigate Climate Change and empower the youth around the world.

OBJECTIVES

Centre for Sustainable Development and Action on Climate Change operates on the basis of its constitution which sets out its objectives, membership criteria, the management structure and the day to day running of the organization.

OVERALL OBJECTIVE

To empower volunteers to serve their communities, meet sustainable environmental needs, encourage peace and promote understanding of sustainable development through Centre for Sustainable Development and Action on climate Change.

More specifically, our objective is to provide training and capacity building for young people, youth organizations as well as to facilitate active participation of youth in development policy-making, reinforcing the role of youth as a dynamic force in the field of North-South interdependence.

SPECIFIC OBJECTIVES

The purposes of this organization shall be:

1. To promote youth empowerment and ensure their meaningful participation in their communities towards poverty reduction.
2. To provide education and trainings in matters of sustainable development and climate change through networking and collaboration with other organization.
3. To campaign against traditions that hinder sustainable development and fight against climate change
4. To educate the general public on behavior change communication, prevention and management campaigns on HIV/AIDS, Drugs and drug abuse and life skills.
5. To empower community and individual action on matters related to sanitation.
6. To promote effective solid waste management through proper dumping and sorting of wastes
7. To come up with innovations that are geared towards elimination of processes and activities that are likely to endanger the environment; and to utilize the environment and natural resources for the benefit of the community- example, coming up with alternative forms of energy.
8. To safeguard environmental protection rights

POLICY STATEMENTS

The organization members and volunteers are guided by the following values;

- ★ Respect.
- ★ Obedience
- ★ Unity/Team work
- ★ Hard and Smart work
- ★ Transparency
- ★ Accountability
- ★ Self-control.

In this organization it's a policy that **no one will be discriminated against** on the basis of his/her HIV/AIDS status, Gender ,Religion, Age or **Race** and that our association and partnership with other people will not be regulated or controlled by his/her HIV status , Gender ,Religion, Age or Race.

ACTIVITIES

Our areas of work will be targeting the youth and children. CSDACC considers Climate Change as an issue of highest relevance and works in its direction both in a full-fledge manner or as a cross-cutting theme in its other projects.

Centre for Sustainable Development and Action on Climate Change will be striving to achieve its specific objectives in the areas of;

- i) Economic Empowerment – for poverty eradication;
- ii) Safeguarding environmental rights;
- iii) HIV/AIDS awareness;
- iv) Safeguarding children rights and education mentorship
- v) Gender and Gender related issues;
- vi) Drug and Drug abuse, counseling and support for the youth;
- vii) General Civic Education.
- viii) Conservation , protection and management of Natural resources
- ix) Protection of climate and developing resilient measures on climate change

WORKING WITH CHILDREN IN KILIFI COUNTY

Centre for Sustainable Development and Action on Climate Change as an organization will be committed to nurturing talents of children for a better society. Registered as a youth organization in 2014 to operate in Kilifi County, the organization will be striving amid financial constraints, to achieve this objective in partnership with the available department of children in Kenya.

The organization shall provide counseling, and psycho-social services to Orphans and Vulnerable Children (OVCS), children rights education and advocacy, linkage of children with other organizations for further support–through networking.

The organization recognizes the need to target also the children’s parents and guardians so as to sensitize them on issues of child rights and empower them to deal better with the children. It is for this reason that efforts will always be made to reach parents and guardians especially those living with Orphans and Vulnerable Children (OVCS) for the benefit of the children. The organization therefore will work both directly and indirectly with children in Kilifi County (not limited to this scope) for a better future.

GREATER INVOLVEMENT OF PEOPLE LIVING WITH HIV/AIDS

Centre for Sustainable Development and Action on Climate Change will reach People Living with HIV/AIDS using Fundamental Geographic Data Set (FGDS), dialogue, debates to provide supportive counseling. This is geared towards:

- i) Helping them to plan and manage their resources;
- ii) Helping People Living with HIV/AIDS realize and mobilize resources for their benefit;

- iii) Helping them to appreciate aspects of their lives or strengths they might otherwise overlook;
- iv) Helping them get control of their life;
- v) Helping them react positively when problems arise;
- vi) Helping them develop skills for solving problems and decision making.

- The organization will not support or take part in any activity that discriminates against People Living with HIV/AIDS.
- The organization will not breach any information deemed confidential as concerns People Living with HIV/AIDS.
- The organization shall stimulate the creation of supportive, political, legal and social initiatives for People Living with HIV/AIDS through capacity strengthening of their support groups.

WORKING WITH YOUTH IN KILIFI COUNTY

- The organization will reach out the youth around Kilifi County with information aimed at improving their lives and making them responsible and productive citizens.
- The youth are actively involved in planning, execution and evaluation of their programs. The youth are core decision makers in the organization.
- The organization also rehabilitates and gives new lease of life to youth in Kilifi District as active participants in local development.
- The organization shall liaise with relevant ministries such as Ministry of Youth and Sports, ministry of Health and the County Government of Kilifi to form a youth resource centre which houses youth friendly services.

Formation of Peer Groups

The organization facilitates the formation of a peer group made up of youth between 15 and 35 years. Most of these youth will be withdrawn from worst forms of child labour.

Through this group, the youth will be facilitated to learn communication skills, life skills and to identify and nurture their talents. Through such discussions and brainstorming held monthly, the youth will find an opportunity to express oneself, build their self-esteem and develop into adequate personalities. The formation of the peer group shall provide an avenue for psychological support and counseling hence improvement of their lives and becoming productive and well-adjusted future adults in the society thus promoting sustainable development at the end.

WORKING WITH WOMEN

Women are targeted with initiatives aimed at;

- i) Empowering them to deal with gender stereotyping in the society;
- ii) Providing them with necessary skills, attitudes and values for economic empowerment;
- iii) Empowering them with information, skills and values on how and where to find help when faced with gender based violence in the family;
- iv) Empowering them to challenge retrogressive and degrading cultural practices and to reclaim their position status and dignity in the society.
- v) Empowering them with skills of combating new HIV infections and HBC.

ENVIRONMENT

This forms one of the key objectives of the organization. The organization strives to ensure a clean, healthy and sustainable environment.

Key interventions:

- ★ Formation of tree nurseries in Kilifi County
- ★ Planting of at least 1000 trees in Kilifi County each year
- ★ Creation of landfills for waste dumping and management
- ★ Organizing awareness forums and public campaigns to build the capacity of the kilifi county community on the importance of Natural resources such as forest, water points and how to conserve them
- ★ Installing of waste bins in areas towns within Kilifi County
- ★ Promoting of green transport system
- ★ Increasing the understanding of the community on the impact of climate change and what actions they can take to build resilience.
- ★ Mobilize public support for environmental protection and compliance with laws to prevent violations of human and environmental rights through local leadership and county campaigns.
- ★ Influence kilifi county policy for the restoration and protection of indigenous forests through community led approaches- especially standing forests in the context of climate change.
- ★ Promote use of energy saving jiko by the community members by helping them develop the rocket stoves.

HEALTH

Sustainable development is a vast idea that rotates in all fields of human life. Therefore, the organization will work strongly with the ministry of health to ensure challenges envisaged in kilifi County pertaining health are addressed.

Key interventions:

- ★ HIV/AIDs Stigma reduction

- ★ HIV/AIDs prevention, control and management campaigns
- ★ Malaria control campaigns
- ★ Infant mortality reduction campaigns
- ★ Fight against drugs and drug abuse in the county
- ★ Champion formation of support groups within communities in Kilifi County
- ★ Campaigns against traditions that hinder modern health and promote hospital delivery

CULTURE

Art and culture are essential drivers for stimulating dialogue and creating awareness of societal topics in the spirit of cultural diversity. Developments in the field of art and culture are hence indispensable components to reinforce understanding between Kilifi County and the neighboring Counties.

We aim at focusing our work in different areas, ranging from cultural policy to artistic exchanges. Our projects and activities will allow people with different backgrounds to sustain a dialogue and to cooperate in the various fields of art and culture, while exploring various forms of creativity and cultural practices through different platforms and tools including the internet.

The organization shall embrace theatre performances attracts majority thus reaching a greater number with information from various fields.

EDUCATION

Education is central to the development of the individual and the progress of society at large. Education in Kilifi County has been hampered with various challenges that are social, economic and cultural; this is evident from the dismal performances realized in the KCPE and KCSE results released yearly.

Thus the organization strives to restore and improved the academic performances of Kilifi County and thus make Kilifi County an epitome of academics among other counties.

Key interventions based on underlying facts:

- ★ Organize peer education sessions in schools around Kilifi County
- ★ Promote formation of clubs in Schools within Kilifi County
- ★ Mentorship programmes in schools within Kilifi County
- ★ Promote feeding programmes in schools within Kilifi County
- ★ Organize life skills sessions in the schools within Kilifi County
- ★ Distribution of sanitary towels in schools within Kilifi County

- ★ Campaign against traditions that hinder education especially for the girl child in Kilifi County
- ★ Capacity build parents and guardians on the essentials of educating their children and the side effects of ignoring education in the society of today
- ★ Organizing parent, guardians and pupils /students sessions in different schools within Kilifi County

AGRICULTURE

Agriculture is the backbone of every development in Kenya as whole. Narrowing down to Kilifi County agricultural practices that exist does not cater for adequate food availability. However, the Department of Agriculture Kilifi County, Kenya Agricultural Research Programme, and other partners are striving to improve agricultural sustainability in Kilifi County.

Centre for Sustainable Development and Action on Climate Change shall work in partnership with various agricultural developmental partners to help improve agriculture in Kilifi County by venturing and employing better agricultural techniques that suits the areas ecological conditions and assisting the communities to adopt for the better of their livelihood.

CLIMATE

Due to the rising situation of climate change, Kilifi County is not left out in the actions on climate change. Therefore, the organization has underlying strategies to help combat climate change within Kilifi County. These include;

Starting of carbon off setting projects such as:

Starting community reforestation project

Promoting solar lighting to the people of Kilifi County

Initiating efficient cooking stoves – Rocket stoves

Greening of transport within Kilifi County

N/B: These would be piloted in partnership with other developmental organizations who share the same objectives towards climate change within and outside Kilifi County.

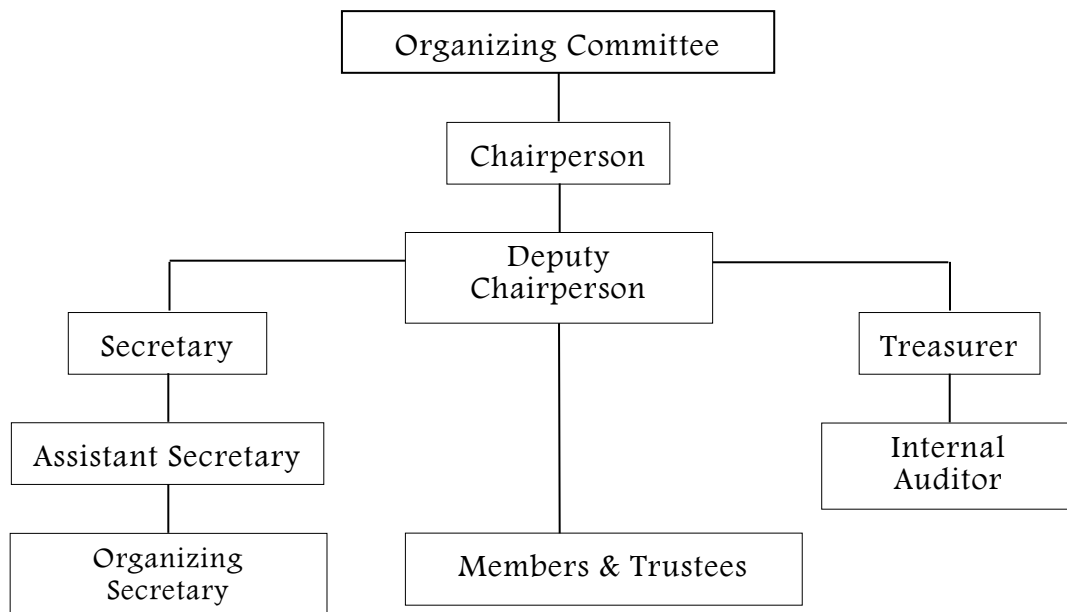
MANAGEMENT STRUCTURE

The Semi- Annual General Meeting is the organization's highest policy making organ which convenes semi- annually. It consists of all members and is conducted through the delegate system that brings all active members to decide on the running of the affairs of

organization. The semi-annual General Meeting also elects an executive committee to run the organization on behalf of the members.

Centre for Sustainable Development and Action on Climate activities are coordinated through a secretariat headed by the Executive Director who is responsible for the coordination and implementation of the organization's programmes and activities. The management Committee and the secretariat work together to harmonize activities and to achieve desired impacts of the organization.

ORGANIZATION ORGANOGRAM



Contacts

Hamisi Tsama Mkuzi,
Chairperson

Email: c4sdacc@gmail.com,

Tel: +254720545282 / +254728111678

L: www.linkedin.com/c4sdacc

T: www.twitter.com/c4sdacc



F: www.facebook.com/c4sdacc

W: c4sdacc.weebly.com

The profile is still under further development, kindly keep checking with us for updates.

THANK YOU!!!!